



Original BMW Accessories M Performance Power Kit

3 Series (F30, F31) - 330d/330d xDrive

4 Series (F32, F33) - 430d/430d xDrive

5 Series (F10, F11) - 530d/530d xDrive

NEWS:

- product relaunched

Product description

The BMW M Performance Power Kit significantly boosts cars' performance. This is now also possible for 6-cylinder diesel engines with **automatic transmission**. The package comprises a new control unit including an engine data update and other hardware components (such as a charge air cooler) that are perfectly coordinated with each other. The improvement in performance demands an adequate braking system - and hence the braking system performance with the BMW M Performance Power Kit has also been raised to 335d or 535d level.

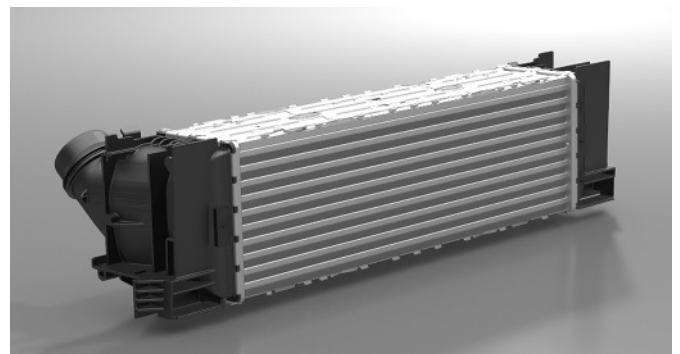
Sales features/benefits

- **Impressive acceleration and rapid responsiveness:** on 330d, 330d xDrive cars, acceleration from 0 to 100 km/h is improved by 0.2 seconds compared to the standard series. Even on 530d, 530d xDrive cars, an improvement of 0.2 seconds is achieved compared to the standard series.
- **Inspirational driving performance, sporty dynamic coordination:** the power boost (210kW/600Nm) is truly thrilling thanks to its sporting character and impresses with outstanding driving performance.
- **Comparable consumption despite higher performance:** fuel consumption and emissions levels in the ECE driving cycle correspond to those of the basic engine, even though the M Performance Power Kit achieves virtually the performance of more powerful engines.
- The **excellent traction**, even at high speeds, allows powerful acceleration and creates a sporty and extremely agile driving experience. Higher torque curve: maximum 600 Nm at 2000/min. Higher power curve: maximum 210 kW at 4000/min. The maximum engine torque depends on the gear selected.
- **Even the brakes need more performance:** the brake on the front axle is increased in size to 17", which corresponds to the braking system on the 335d or 535d. The excellent brake delay allows safe and comfortable braking and hence an enhanced feeling of safety.
- The M Performance Power Kit has been **comprehensively tested by BMW**, including through long-term trials, for safety. The warranty therefore remains intact.
- The **M Performance lettering** that can be attached to the sills gives the car a sportier look from the outside, providing a flash of the car's hidden performance.

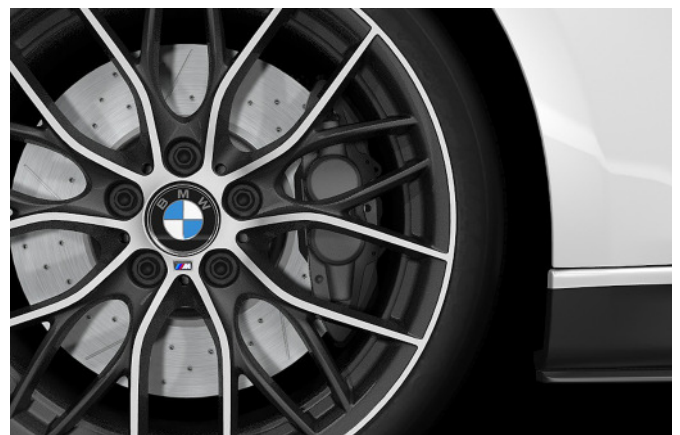


M Performance vs. Serie

Performance boost with the M Performance Power Kit. More cooling air thanks to larger charge air cooler.



M Performance Power Kit charge air cooler



Adequate braking system: drilled brake disk from the 330d plus Power Kit

(Continued on page 2)

Content/relevance

Please note that this product information is intended solely as prior information regarding new products.

Before ordering, always check the specified part numbers in the EPC. Only the EPC provides the information that should be taken as valid and current.

Complete price package

For a detailed tender preparation, find the complete price package on the KSD DVD.

Please refer to your price system or the latest price publications for the latest prices.

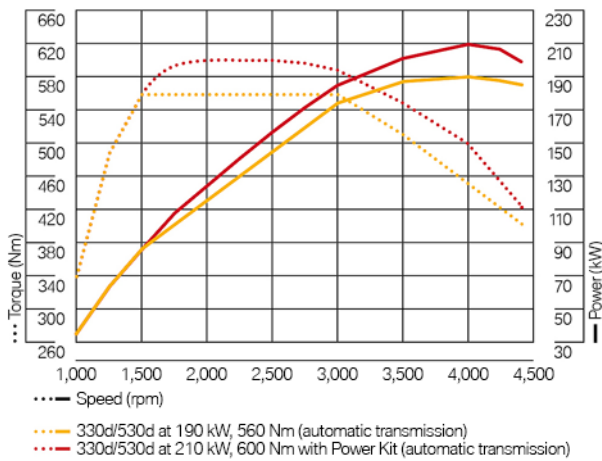
M Performance Power Kit

3 Series (F30, F31) - 330d/330d xDrive

4 Series (F32, F33) - 430d/430d xDrive

5 Series (F10, F11) - 530d/530d xDrive

Performance values of the BMW 330d/530d with BMW M Performance Power Kit
Full load 330d/530d



Performance values M Performance Power Kit

330d, 530d AT	Series	M Performance Power Kit
Acceleration (0-100 km/h)		-0.2 s
Power	258 HP 190 KW	286 HP 210 KW (4000/min)
Torque	560 Nm	600 Nm (2000-2750/min)

Competition comparison

- During development, the emphasis was placed on long-term endurance and therefore quality and safety. The M Performance Power Kit's torque was tested long-term on a high-speed stretch of road, corresponding to around 250,000 km of running performance.
- Exceptionally high quality of the hardware components compared to competitor products. The larger charge air cooler amplifies the engine's performance and level of efficiency. The drilled, grooved brake disk (330d, 300d xDrive) reduces fading and improves the responsiveness of the brakes even further.

Functions

- The BMW M Performance Power Kit significantly boosts cars' performance.
- Better responsiveness on wet roads: for the F30, F31 (330d, 330d xDrive) models there is a 17" brake upgrade on the front axle with a 4-piston aluminium fixed calliper. The brake disk is drilled and grooved, thereby reducing fading.
- For the F10, F11 (530d and 530d xDrive) models with automatic transmission, there is a 17" brake upgrade on the front axle with aluminium floating calliper. The brake disk is not drilled and grooved.

Cross-selling

For exceptionally sporty driving, BMW also recommends the installation of the larger thermal, even more powerful 18" BMW M Performance brake system. The customer can choose between two colour versions of this system. The coloured brakes indicate maximum safety with maximum driving enjoyment.

Supplied package

- New engine control unit including engine data update.
 - More powerful charge air cooler.
 - BMW M Performance Power Kit aluminium badge
 - Brake components for the upgrade on the front axle. e.g. 330d, 4-piston aluminium fixed calliper, drilled and grooved brake disks, brake pads.
 - BMW M Performance sticker for side skirt.
- See EPC for details of the kit's contents.

(Continued on page 3)

M Performance Power Kit

3 Series (F30, F31) - 330d/330d xDrive

4 Series (F32, F33) - 430d/430d xDrive

5 Series (F10, F11) - 530d/530d xDrive

Technical information

When ordering the kit, please specify the **chassis number** to enable control unit encoding.

The conversion and data programming can only be performed by the BMW dealer organisation.

Installation is as per the installation instructions.

When the full potential of the BMW M Performance Power Kit is being harnessed, the series brake system can be subjected to higher thermal stresses.

To reduce the additional thermal stress on the brake system, we recommend using alloy wheels.

During exceptionally sporty driving, we also recommend the installation of a larger BMW M Performance brake system that is designed to cope with greater thermal stresses (SZ P1A).

F30	330d	18" set	optionally:
F31	330xd	BMW M Performance	34 11 2 221 445 red
F32		brake system	34 11 2 221 446 yellow
F33			34 11 2 221 447 orange



Note

The new 18" BMW M Performance brake system is only approved in combination with at least 18" alloy wheels (including in winter).

To carry out coding of the BMW M Performance Power Kit, **ISTA/P version 2.49.2** must be installed at the very least. ◀



Safety note

For approval and warranty reasons, the BMW M Performance Power Kit must only be installed in its entirety. Individual parts must not be installed in isolation.

Please alert the customer to the fact that the car insurance company must be notified of the increase in the car's engine power. ◀

Availability/EPC DVD

from 03/2013

Installation time

Approx. 1.0 hours on 3 Series and 5 Series models.

If the brake system is being upgraded, the installation time increases by a further 1.5 hours.

Installation instructions

BMW M Performance Power Kit	01 29 2 349 048
M Performance installed lettering sticker	01 29 2 297 912
see ASAP	

Part numbers

For 330d and 330d xDrive WITH 18" M sport brake (SA 2NH) or BMW M Performance 18" brake system (SZ P1A)

Power Kit from 07/2012 (EU3) EU5/EU6 11 12 2 338 015

For 330d and 330d xDrive WITHOUT 18" M sport brake (SA 2NH) or BMW M Performance 18" brake system (SZ P1A)

Power Kit from 07/2012 (EU3) EU5/EU6 11 12 2 347 695

530d and 530d xDrive

Power Kit from 03/2012 (EU3)
EU5/EU6* 11 12 2 338 078

*Incl. brake upgrade on the front axle, then corresponds to a 535d.